



## Coffee table 80 x 80 cm

Coffee table 80 x 80 cm with aluminium structure and ceramic or Synteak top

### Collection

Konic



### Structure



mat moka  
AL02

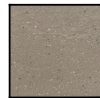


mat grey  
AL08

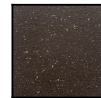


mat blanc  
AL04

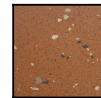
### Plateau



TR4  
TR4



TR5  
TR5



TR6  
TR6



teak  
VI20



## Caractéristiques

Dimensions : 80 × 80 × 35 cm

Poids brut : kg

Poids net : 42 kg

Volume : 0.31 m<sup>3</sup>

Structure : Aluminium laqué

Plateau : Ceramic or Synteak